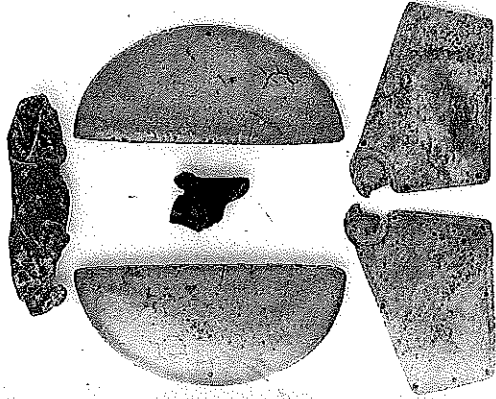


61

61 A PALMYRAN LIMESTONE RELIEF IN THE FORM OF THE BUST OF A WOMAN, wearing elaborate jewellery, her right hand raised and holding a fold of her himation which is draped over her head, fragment of inscription to the left side of her head, 19½ in. (50.4cm.), circa 3rd Century A.D.

(SEE ILLUSTRATION)



62  
63  
64  
65

62 A FRAGMENTARY EGYPTIAN OPAQUE DARK RED GLASS FIGURE OF A LION, in a recumbent position, finely modelled with pronounced ribs and thick mane, bored down the centre and with a narrow groove between the hind legs, mottled greenish weathering, 2½ in. (6.3cm.), New Kingdom, 19th Dynasty or possibly Late Period (legs and section of ramp missing)

\*\* The groove suggests that this piece was originally made as an applique for the rim of a vessel. For a similar example in blue glass cf. Corning, No. 162

(SEE COLOUR ILLUSTRATION)

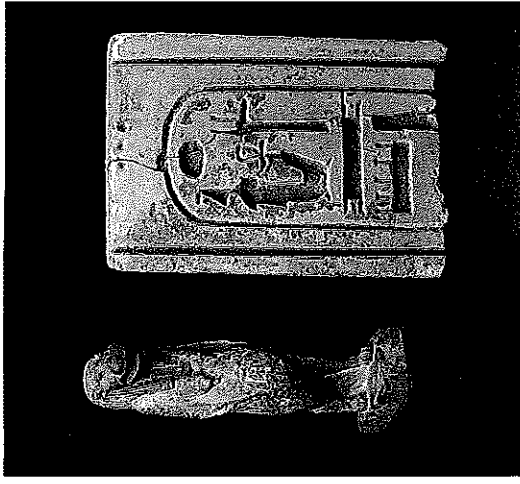
63 AN EGYPTIAN BLUE GLASS INLAY, in the form of a profile head, 1 in. (2.5cm.), New Kingdom/Ptolemaic Period

(SEE COLOUR ILLUSTRATION)

64 TWO EGYPTIAN GREEN-GLAZED COMPOSITION TERMINALS, from a necklace, of semi-circular form, with holes for attachments, 3½ in. (7.9cm.) by 1½ in. (3.5cm.), Middle Kingdom

\*\* Hayes, Part I, fig. 198

(SEE COLOUR ILLUSTRATION)



66

67

- 65 TWO EGYPTIAN GREEN-GLAZED COMPOSITION PLAQUETTES, from a pectoral, of asymmetrical form, pierced with holes for attachment, a falcon head at one corner,  $1\frac{1}{2}$  in. (4.5 cm.) by  $2\frac{1}{4}$  in. (5.4 cm.), Late Period (2)

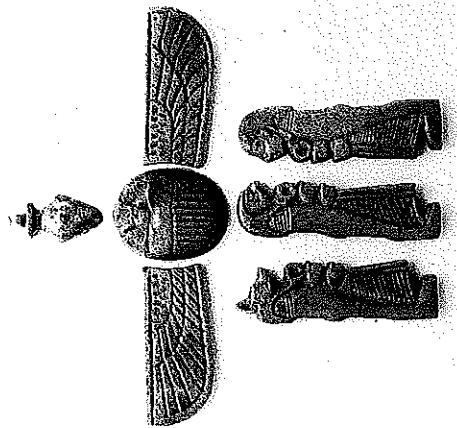
(SEE COLOUR ILLUSTRATION ON PAGE 25)

- 66 AN EGYPTIAN PALE-GREEN GLAZED COMPOSITION AMULETIC FIGURE OF THE HIPPO-POTAMUS GODDESS THOERIS, protectress of pregnancy and sleep,  $4\frac{1}{2}$  in. (11.1 cm.), 26th Dynasty

(SEE COLOUR ILLUSTRATION ON PAGE 25)

- 67 A FRAGMENT FROM AN EGYPTIAN TURQUOISE-GLAZED COMPOSITION FOUNDATION DEPOSIT PLAQUE with part of the cartouche of Ramesses II,  $4\frac{1}{2}$  in. (11.7 cm.) by  $3\frac{1}{4}$  in. (8.3 cm.), New Kingdom

(SEE COLOUR ILLUSTRATION ON PAGE 25)



68

- 68 A SET OF THREE EGYPTIAN BLUE-GLAZED FAIENCE MUMMY ATTACHMENTS, in the form of the figures of three of the Sons of Horus, comprising the jackal-headed God, Dua-mut-ef, the falcon-headed God, Qebseruef, the human-headed God, Imsety, all pierced with holes at the back for attachment, all  $2\frac{1}{2}$  in. (6.4 cm.); and an Egyptian blue-glazed faience winged Scarab, pierced for attachment, with centrally divided wing-case, the wings with incised detail,  $5\frac{1}{4}$  in. long (13.4 cm.); and an Egyptian blue-glazed faience "heart" Amulet,  $1\frac{1}{4}$  in. (2.8 cm.), all Late Period (5)

(SEE ILLUSTRATION)

- 69 AN EGYPTIAN BRONZE INLAY, in the form of a male figure kneeling in profile with his hands upraised above his head, loops behind for attachment,  $3\frac{1}{2}$  in. (7.7 cm.), Late Period

- 70 An Egyptian bronze kneeling Figure of the Chief Sailor Udja-Hor,  $2\frac{1}{2}$  in. (5.1 cm.), Late Period

- 71 Four Egyptian amethyst Scarabs, New Kingdom, three carnelian Scarabs, Middle Kingdom, a small blue scarab, 2nd Intermediate Period, a green-glazed steatite unincised Scarab, 2nd Intermediate Period, a green-glazed steatite Scarab of Tutmosis III (with cartouche); and an amulet (11)

- 72 A Group of ten miscellaneous Egyptian Scarabs comprising: a green-glazed Scarab of Queen Tiye, New Kingdom, a Scarab with a crocodile and antelope, 2nd Intermediate Period, a Scarab with three columns of signs, Hyksos Period, Another with a sphinx and damaged cartouche of Tutmosis III, New Kingdom, Another with rope braid around edge, Hyksos Period, two small Scarabs, 2nd Intermediate Period, Another with fish, 2nd Intermediate Period, Another with standing king, New Kingdom, and Another with hornet and name of Amen-Re, 19th Dynasty (10)

- 73 A Group of nine Egyptian steatite Scarabs, including an example showing a Ramesside King seated on a throne (9)

- 74 A Group of ten Egyptian steatite Scarabs, including an example with the cartouche of Tutmosis III (10)

- 75 A Group of four Egyptian turquoise-glazed composition Inlays in the form of the four Sons of Horus, all pierced with holes for attachments,  $3\frac{1}{4}$  in. (8.6 cm.) by  $3\frac{1}{4}$  in. (9.8 cm.), all Late Period (4)

- 76 An Egyptian green-glazed composition Ushabti Figure, the back-pillar with hieroglyphic inscription,  $7\frac{1}{4}$  in. (18.1 cm.); Another,  $7\frac{1}{4}$  in. (18.5 cm.); and Another, smaller, with plain back pillar,  $3\frac{1}{4}$  in. (9.5 cm.), all 26th Dynasty; an Egyptian green-glazed composition Pectoral,  $2\frac{1}{4}$  in. (6.6 cm.); an Egyptian stone Scarab; and an Egyptian turquoise-glazed composition openwork Ring (6)

- 77 A large Egyptian Pre-Dynastic pottery Jar with ovoid body and rounded lip,  $2\frac{1}{2}$  ft. 1 in. (64 cm.), circa 3200 B.C.

- 78 An Egyptian limestone Fragment of rectangular form, with the cartouche of Ramesses II,  $1\frac{1}{4}$  in. (42.5 cm.), New Kingdom

79 AN EGYPTIAN TURQUOISE-GLAZED UDJAT EYE AMULET, the cheek with red-glazed inlay, the eye white-glazed with black-glazed pupil,  $2\frac{1}{4}$  in. (5.8cm.), Late Period

\*\* Cf. Petrie, No. 39L

(SEE COLOUR ILLUSTRATION)

80 An Egyptian dark-green glazed composition amuletic Figure of the God Bes,  $1\frac{1}{4}$  in. (3.2cm.), 26th Dynasty

(SEE COLOUR ILLUSTRATION)

81 An Egyptian ivory amuletic Figure of a Fish,  $1\frac{7}{8}$  in. (4.8cm.), Middle Kingdom

(SEE COLOUR ILLUSTRATION)

82 An Egyptian turquoise-glazed composition amuletic Figure of a man in a walking position, his arms held rigidly by his side,  $2\frac{3}{8}$  in. (6.6cm.), 26th Dynasty

(SEE COLOUR ILLUSTRATION)

83 An Egyptian obsidian Amulet in the form of a head-rest,  $\frac{3}{8}$  in. (1.5cm.), New Kingdom

(SEE COLOUR ILLUSTRATION)

84 An Egyptian green-glazed composition Amulet in the form of the seated figure of a Queen, 1 in. (2.5cm.), Ptolemaic Period

(SEE COLOUR ILLUSTRATION)

85 An Egyptian lapis lazuli amuletic Figure of the hawk-headed God, Horus, 1 in. (2.5cm.), Late Period; and a green-glazed Plaque

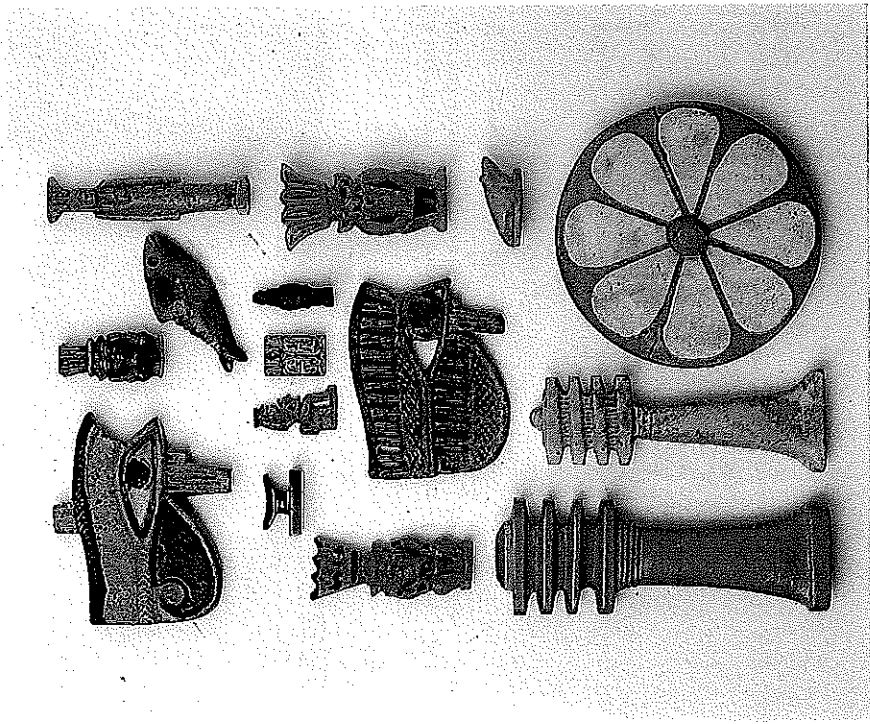
(SEE COLOUR ILLUSTRATION)

86 An Egyptian turquoise-glazed composition amuletic Figure of the dwarf God Bes,  $2\frac{1}{4}$  in. (5.8cm.), 26th Dynasty

(SEE COLOUR ILLUSTRATION)

87 An Egyptian turquoise-glazed composition openwork Udjat Eye Amulet,  $1\frac{1}{4}$  in. (4.8cm.), Late Period

(SEE COLOUR ILLUSTRATION)



79 83 91  
86 84 87  
80 85 85  
81 88  
82 89  
90 92

88 AN EGYPTIAN turquoise-glazed composition amuletic Figure of the dwarf God Bes, double-sided, 2¼ in. (5.8 cm.), 26th Dynasty

(SEE COLOUR ILLUSTRATION)

89 AN EGYPTIAN PALE-GREEN GLAZED COMPOSITION FIGURE OF A FROG, the stylised figure of Bes on the base, 1¼ in. (3.2 cm.), New Kingdom

(SEE COLOUR ILLUSTRATION)

90 AN EGYPTIAN TURQUOISE-GLAZED COMPOSITION DJED PILLAR AMULET, 4 in. (10.1 cm.), 26th Dynasty

(SEE COLOUR ILLUSTRATION)

91 AN EGYPTIAN TURQUOISE-GLAZED COMPOSITION DJED PILLAR AMULET, 3¼ in. (9.5 cm.), 26th Dynasty

(SEE COLOUR ILLUSTRATION)

92 A large Egyptian glazed composition Tile in the form of a Rosette, the colouring grey and white with yellow centre, 3¼ in. diam. (8.9 cm.), New Kingdom

\*\* Cf. Hayes, Part II, fig. 232

(SEE COLOUR ILLUSTRATION)

93 A SMALL EGYPTIAN STONE RELIEF, with a family group of three standing figures, the centre figure male, all standing on a platform base, 4½ in. (11.4 cm.), Middle Kingdom

(SEE ILLUSTRATION)

94 AN EGYPTIAN BASALT BUST of an official, inscription on the back, 5½ in. (14 cm.), Saite Period

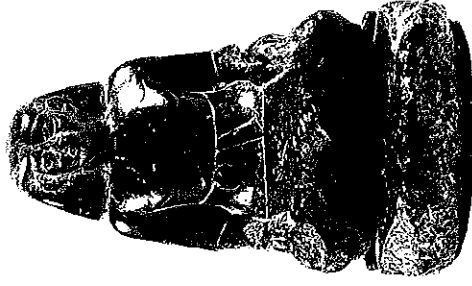
(SEE ILLUSTRATION)

95 AN EGYPTIAN STONE SEATED FIGURE OF A SCRIBE, his hands resting on his knees, on pedestal base, 5¼ in. (14.6 cm.), Middle Kingdom

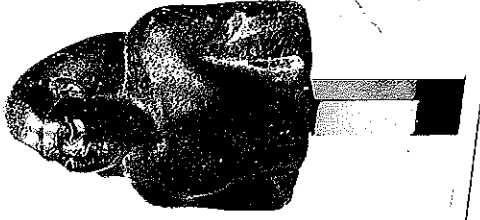
(SEE ILLUSTRATION)

96 AN EGYPTIAN STONE "BLOCK" STATUE, in the form of a seated male figure, his arms crossed over his knees, his knees raised, a figure of Osiris incised on the front, a line of inscription to either side, also a line of inscription on the arms to either side, 10¼ in. (26.1 cm.), Late Period

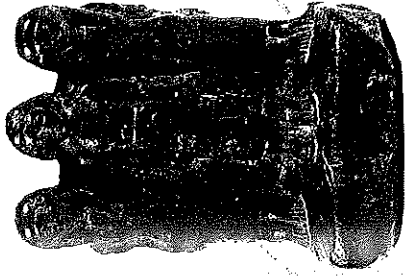
(SEE ILLUSTRATION)



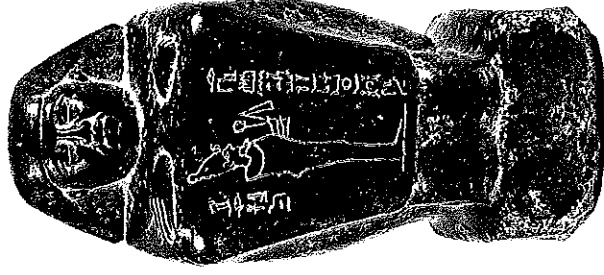
95



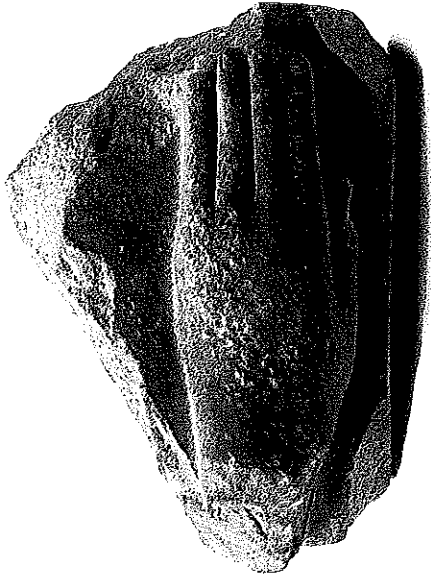
94



93



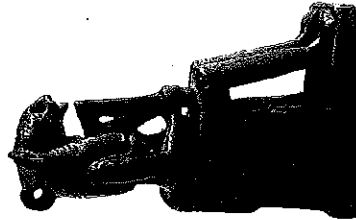
96



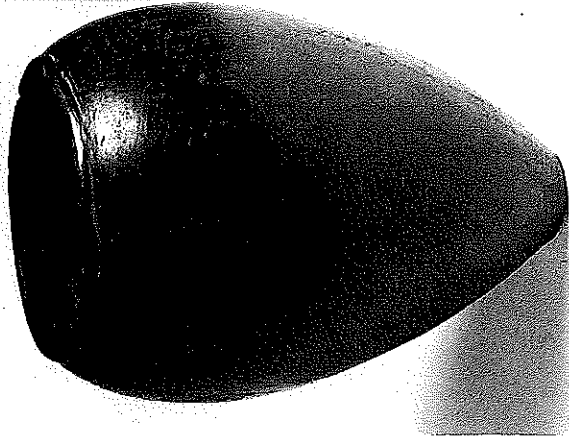
97

97 AN EGYPTIAN SANDSTONE HAND FROM A STATUE OF RAMESSSES II, with an inscription reading "Son of Re, Lord of Appearances (Rameses Mer-Amun), Beloved of Atum, Lord of Heliopolis", 11½ in. (29.2cm.), New Kingdom

(SEE ILLUSTRATION)



98



104

98 AN EGYPTIAN GREEN-GLAZED COMPOSITION AMULETIC FIGURE OF SEKHEMET, the lioness-headed Goddess, she is seated on an openwork throne and holding a sistrum, loop for suspension at the back of her head, 2½ in. (6.7cm.), 26th Dynasty

(SEE ILLUSTRATION)

99 An Egyptian green-glazed composition Amulet in the form of the seated figure of Harpocrates, and two Egyptian glazed composition Udjat Eye Amulets (3)

100 Two Egyptian turquoise faience Tiles, of rectangular form, pierced at the back for attachment, 2¼ in. (5.8cm.) by 1¼ in. (3.5cm.), circa 3rd Dynasty, reign of Zoser, 2620-2600 B.C. (2)

101 An Egyptian wood Ushabti Box, of rectangular form and with cover, decorated in black, with a frieze of hieroglyphic inscription, 12¼ in. (32.8cm.) by 11 in. (28cm.), Late Period

102 An Egyptian limestone Relief, of rectangular form, carved with the figure of a bull standing in profile, 7 in. (17.8cm.) by 6 in. (15.3cm.), Saite Period

103 A Romano-Egyptian terracotta Group in the form of a male and female bust embracing each other, the busts are set on a straight-sided base, the whole with traces of painted decoration, 5¼ in. (13.6cm.), 1st Century B.C./1st Century A.D.

104 AN EGYPTIAN PRE-DYNASTIC BLACK-TOPPED POTTERY JAR, of ovoid form, 8¼ in. (22.2cm.), circa 3200 B.C.

(SEE ILLUSTRATION)

105 An Egyptian pale green-glazed composition Pilgrim Flask, of rounded, flattened form, a raised band of inscription with "happy New Year" wishes round the sides, a simulated jewelled collar just below the neck, the neck in the form of a lotus column, two crouching figures of monkeys to either side, 5½ in. (14cm.), New Kingdom

106 AN EGYPTIAN PALE-GREEN GLAZED COMPOSITION PILGRIM'S FLASK, of depressed circular form, a raised border of rosettes and inscription with "happy New Year" wishes round the sides, with a simulated jewelled collar, lotus column neck, two seated figures of monkeys to either side, 6½ in. (16.5cm.), 26th Dynasty

107 AN EGYPTIAN POLYCHROME-PAINTED WOOD STELE of a Priestess of Amun, with rounded top, decorated with the gilded figure of the deceased Mer-sw-Amun shown adorning Re-Horakhty (left) and Anum (right), surmounted by a winged gilded ornament, eight lines of hieroglyphic text below and the usual offerings formula, 18½ in. (47cm.) by 12 in. (30.5cm.), Ptolemaic Period

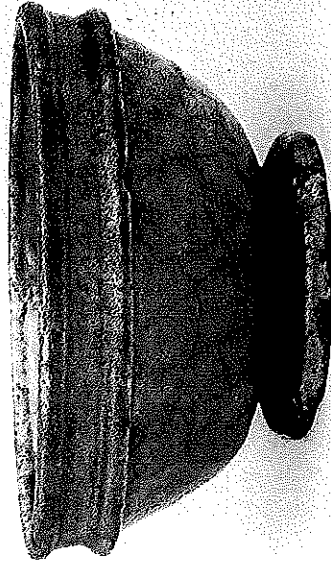
108 A FRAGMENT FROM AN EGYPTIAN LIMESTONE MALE HEAD, 4½ in. (12.1 cm.), Middle Kingdom

109 A small Alexandrian bronze weight in the form of the bust of a grotesque, loop for suspension on the crown of his head, 2½ in. (7.3 cm.), circa 1st Century B.C./1st Century A.D.

110 A Romano-Egyptian turquoise-glazed pottery hemispherical bowl, triangular motifs in black round the exterior rim, 5 in. diam. (12.7 cm.), circa 1st Century B.C./1st Century A.D.

111 An Egyptian wood headrest, 7 in. (17.8 cm.), Middle Kingdom

112 An Egyptian bronze circular disc mirror, with wood lotus column handle, 1½ in. (28.9 cm.), Late Period



113

113 A ROMANO-EGYPTIAN TURQUOISE-GLAZED POTTERY BOWL, the exterior rim with two raised ridges, on flat heavy foot, 7½ in. diam. (18.2 cm.), circa 1st Century B.C./1st Century A.D.

(SEE ILLUSTRATION)

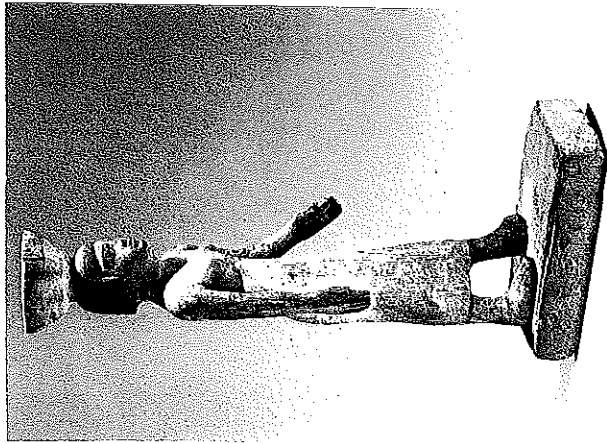
114 An Egyptian bronze figure of a fish, 4½ in. long (11.5 cm.), Late Period



115

115 AN EGYPTIAN DARK-GREY GRANITE MALE HEAD, with striated and tiered wig, 5½ in. (14.9 cm.), New Kingdom

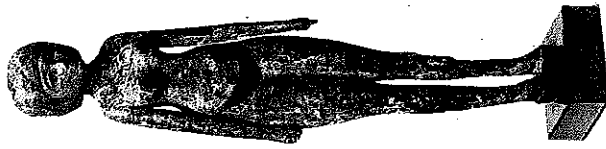
(SEE ILLUSTRATION)



115a

115A AN EGYPTIAN PAINTED WOOD FIGURE OF AN OFFERING BEARER, standing on a rectangular base, 14in. (35.6cm.), *Middle Kingdom*

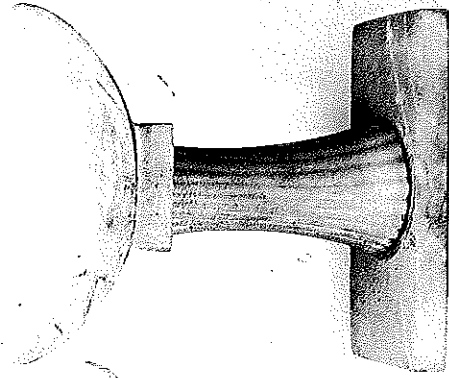
(SEE ILLUSTRATION)



116

116 AN EGYPTIAN WOOD CONCUBINE, of slender form, with long arms and legs, naked except for a garment covering the pubic area, 8in. (20.2cm.), *Late Period*

(SEE ILLUSTRATION)



117

117 AN EGYPTIAN ALABASTER HEADREST, with fluted slightly flaring shaft, on rectangular base, 9in. (22.9cm.), *Old Kingdom*

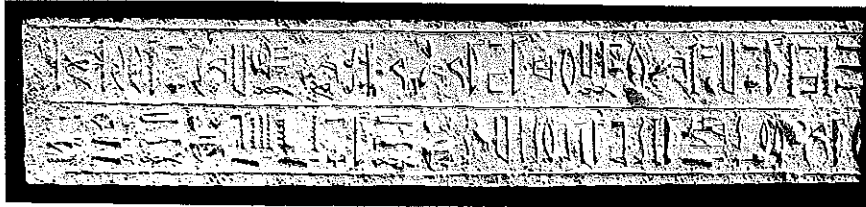
(SEE ILLUSTRATION)

118 A LARGE EGYPTIAN BRONZE AND WOOD FIGURE OF AN IBIS, 14in. (35.5cm.), 22in. long (56cm.), *Late Period*

(SEE LOOSE LEAF COLOUR ILLUSTRATION)

119 AN EGYPTIAN LIMESTONE PANEL, probably a Doorjamb, from a Tomb, of long, narrow, rectangular form, with two vertical columns of inscription - name missing - asking for a long life and freedom of movement, etc., 44½ in. (113cm.) by 9½ in. (23.5cm.), *New Kingdom*

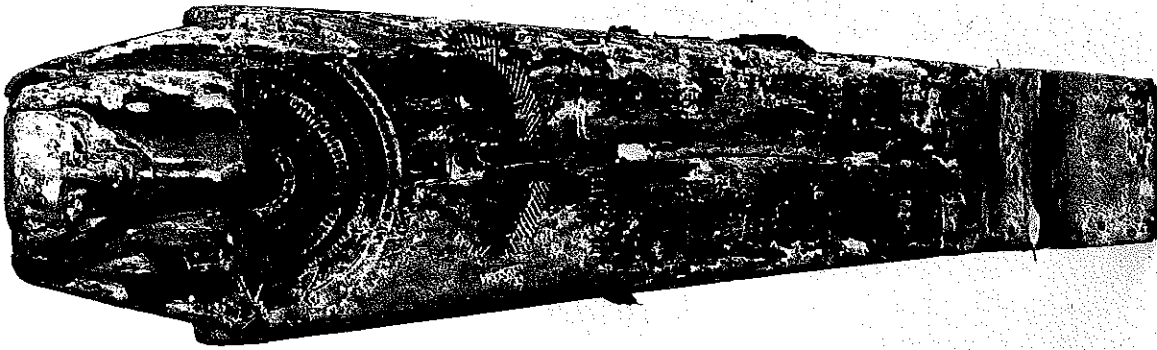
(SEE ILLUSTRATION)



119

120 AN EGYPTIAN WOOD ANTHROPOID COFFIN, the lid painted with the bearded head of the deceased, wearing a wig and broad collar, a winged scarab below, the coffin of slender tapering form, 5ft. 7in. (170cm.), *New Kingdom/Late Period*

(SEE ILLUSTRATION)



120



120A

120A AN EGYPTIAN MOTTLED REDDISH STONE BUST, with uraeus and long wig, 7¼ in. (18.4cm.), *Late Period*

(SEE ILLUSTRATION)





121

121 AN EGYPTIAN BRONZE FIGURE OF ISIS, the Goddess is standing with her wings outstretched before her, wearing a horned solar disc headdress,  $8\frac{1}{4}$  in. (21.6 cm.), 26th Dynasty

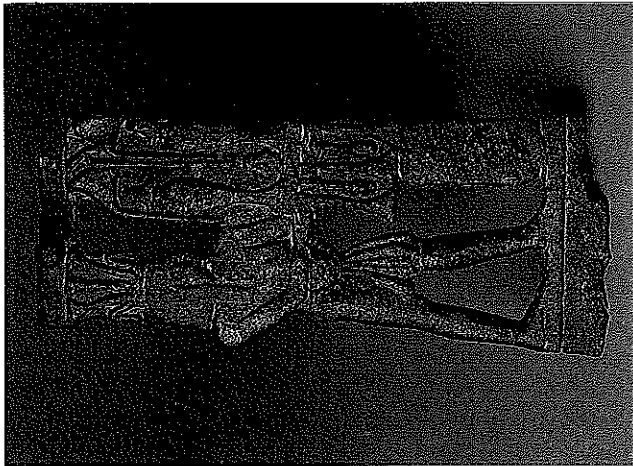
(SEE ILLUSTRATION)



122

122 AN EGYPTIAN POTTERY "PLASTIC VASE", in the form of a crouching monkey, decorated with brown-painted dashes and other details, on flat base,  $2\frac{1}{4}$  in. (5.7 cm.), 1st Millennium B. C.; probably from Nancrasis

(SEE ILLUSTRATION)



123

123 AN EGYPTIAN BRONZE RELIEF PLAQUE, with the figure of a Nile God standing and facing right, a clump of papyrus on his head, he supports a tray of lotus flowers, a sceptre terminating in the head of the Seth animal and lotus flowers with papyrus umbels pendent from the tray, below this tray is a blank cartouche, 8 in. (20.3 cm.), Late Dynastic or Early Ptolemaic Period

\*\* Formerly in the Ernest Brummer Collection

(SEE COLOUR ILLUSTRATION)

124 An Egyptian turquoise-glazed composition amuletic Figure of the hippopotamus Goddess Theoris, loop for suspension at the back of her head,  $3\frac{1}{2}$ in. (8.3cm.), 26th Dynasty

125 A FRAGMENT FROM AN EGYPTIAN LIMESTONE RELIEF, carved with the lower part of a male figure walking towards a group of vases and food offerings,  $15\frac{1}{4}$ in. (39.5cm.) by  $13\frac{1}{2}$ in. (34.5cm.), Old Kingdom

126 AN EGYPTIAN FUNERARY PLASTER MASK OF A WOMAN, her round, slightly smiling face, with delicate nose, beaded necklace and earrings and elaborate coiffure parted at the centre and lifted into a circular braid on the crown; the front of the braid pierced for an attachment, the skin painted pink, the hair and eyes black, the jewellery and lips ochre,  $9\frac{1}{2}$ in. (14.1cm.), circa 1st Half of the 2nd Century A.D.

\*\* Provenance: H. Dufour, Cairo

\* Literature: Grimm, 1974, pl. 83, 1, aus Ägypten, Wiesbaden, 1974

(SEE ILLUSTRATION)

127 AN EGYPTIAN ALABASTER CANOPIC JAR, with human-headed Cover, representing Amsety, one of the four Sons of Horus, the front with an invocatory inscription,  $16\frac{1}{2}$ in. (41cm.), Saite Period

(SEE COLOUR ILLUSTRATION ON PAGE 44)



126

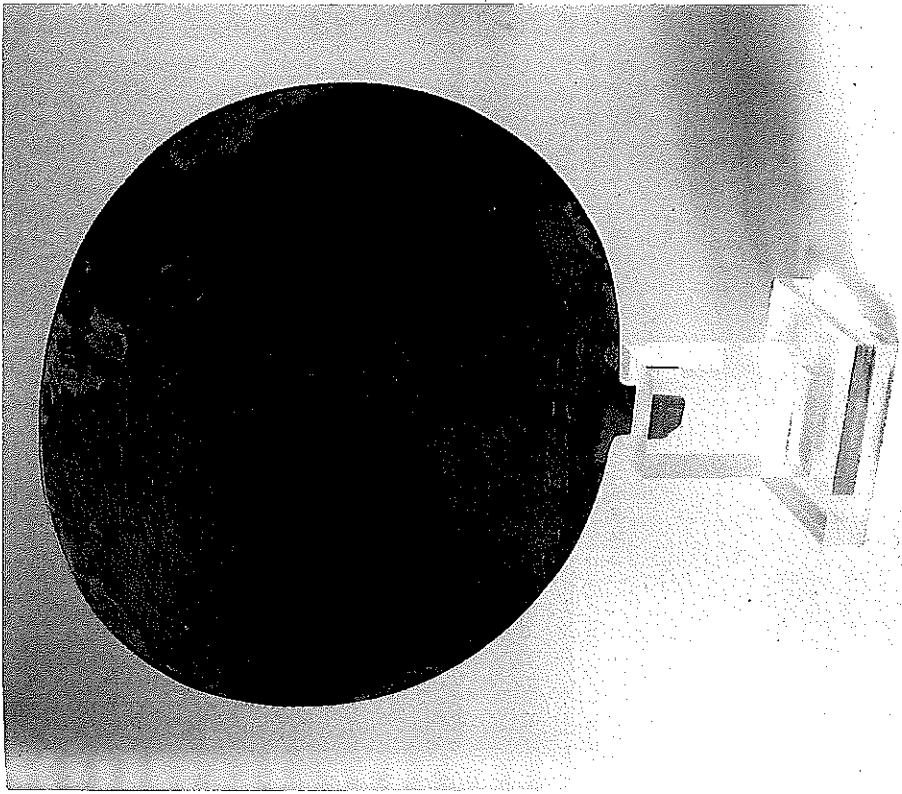
128 AN EGYPTIAN DARK GREY GRANITE FRAGMENT OF A KNEELING FIGURE, his hands resting flat on his thighs, the rectangular base and back pillar with a hieroglyphic inscription,  $7\frac{1}{2}$ in. (19cm.), Saite Period

\*\* The owner's name is Vizir Bakenreheb, whose tomb is one of the largest in Saqqara. His statuette (ushabti) is reproduced in Aubert, pl. 55

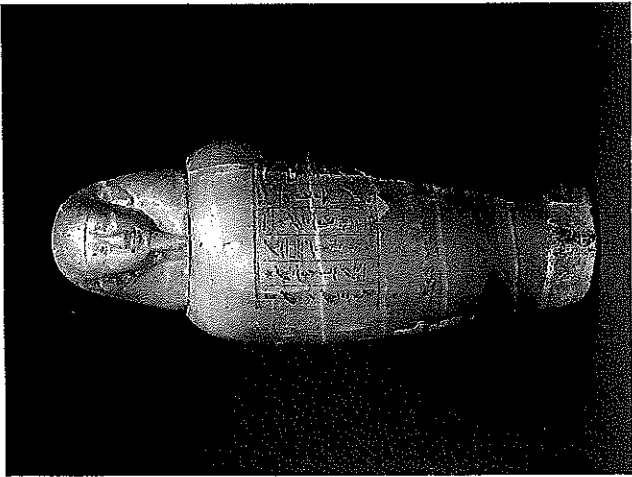
(SEE COLOUR ILLUSTRATION ON PAGE 44)

129 A LARGE EGYPTIAN BRONZE MIRROR, with short tang, the foot of the disc with a hieroglyphic inscription reading 'a mirror made by Heka for his daughter, his beloved Irtá-kacyt, 14in. diam. (35.6cm.), Middle Kingdom

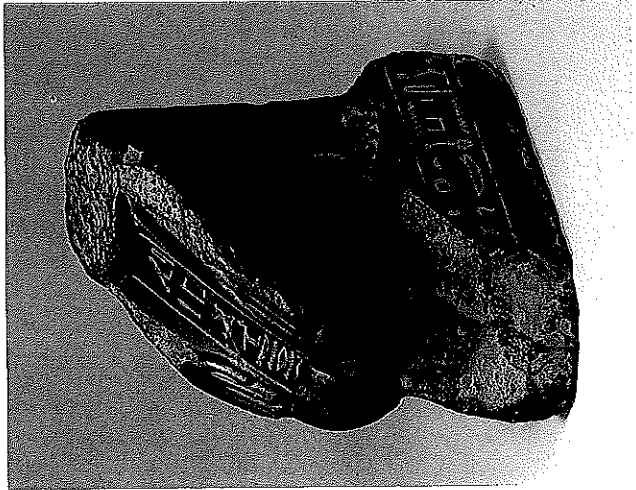
(SEE COLOUR ILLUSTRATION ON PAGE 45)



129



127



128

- 130 AN EGYPTIAN SANDSTONE RELIEF FRAGMENT, showing the head and shoulders of the Nome God of the bull-Nome, almost certainly the tenth Lower Egyptian Nome, 12in. (30.5cm.), by 10½in. (26.7cm.), *New Kingdom*



131

- 131 AN EGYPTIAN FRAGMENTARY LIMESTONE RELIEF, of rectangular form, carved with the upper parts of two male figures picking figs, horus hawks and other symbols in the field, 9in. (22.9cm.) by 19¼in. (49.5cm.), *Old Kingdom*

(SEE ILLUSTRATION)

- 132 An Egyptian wood Mummy Mask with yellow and black-painted decoration, 7¼in. (18.8cm.), *Late Period*

- 133 A LARGE EGYPTIAN BRONZE ARGIS OF ISIS, the Goddess wearing the horned solar disc and jewelled collar, 11in. (28cm.), *Late Period*

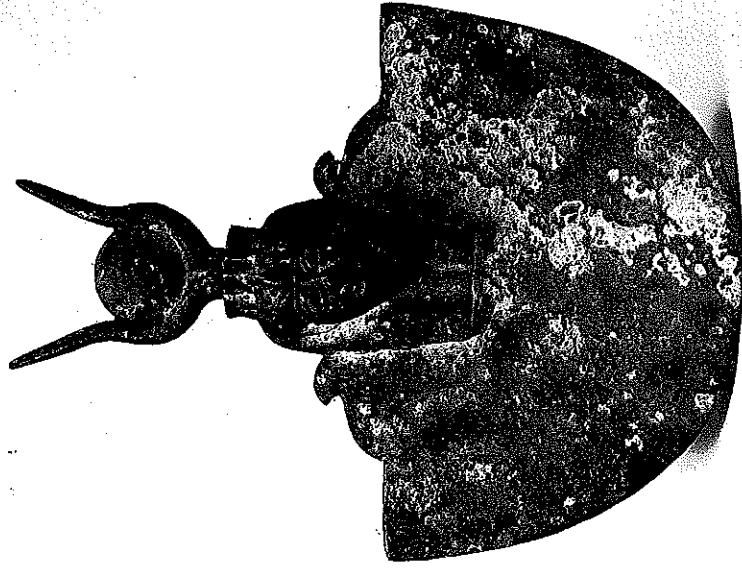
(SEE ILLUSTRATION)

- 134 AN EGYPTIAN LIMESTONE FIGURE OF A HORUS HAWK, 11½in. (29.9cm.), *Late Period*

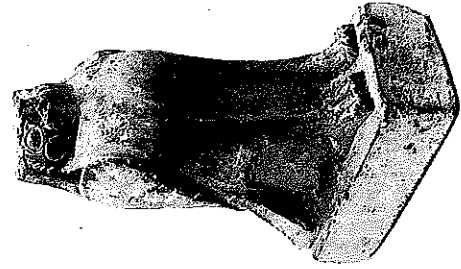
(SEE ILLUSTRATION)

- 135 AN EGYPTIAN LIMESTONE FIGURE OF A HAWK, on a rectangular base, 12in. (30.5cm.), *Late Period*

(SEE ILLUSTRATION)



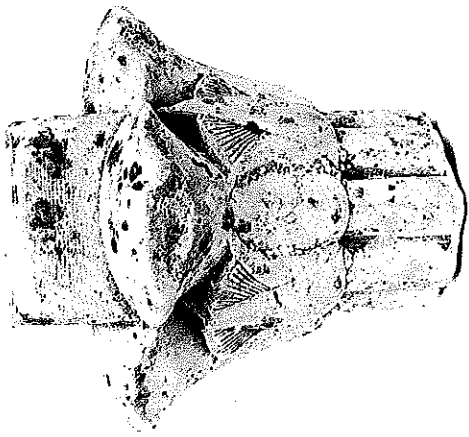
133



134



135



136

136 AN EGYPTIAN LIMESTONE LOTUS CAPITAL, 5½ in. (13.4cm.), Late Period  
(SEE ILLUSTRATION)



137

137 A SMALL EGYPTIAN LIMESTONE RELIEF carved with the Head of a King, 4½ in. (11.5cm.) by 4 in. (10.2cm.), Late Period

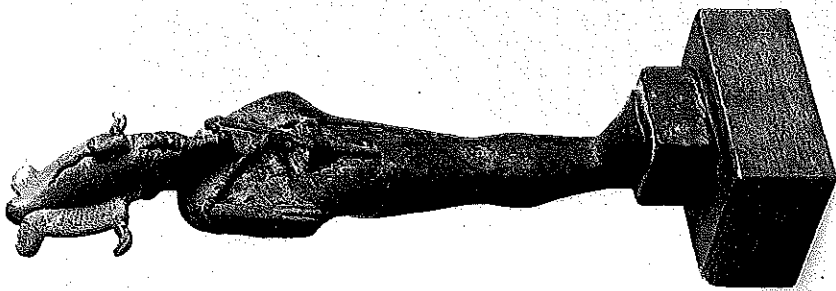
(SEE ILLUSTRATION)



138

138 AN EGYPTIAN WOOD BEARDED MALE BUST from a mummy case with long plaited black-painted beard and striped turquoise wig, the face green, the eyes inlaid, a black-painted scarab on the crown of the head, 19½ in. (48.9cm.), New Kingdom/Late Period

(SEE ILLUSTRATION)



139

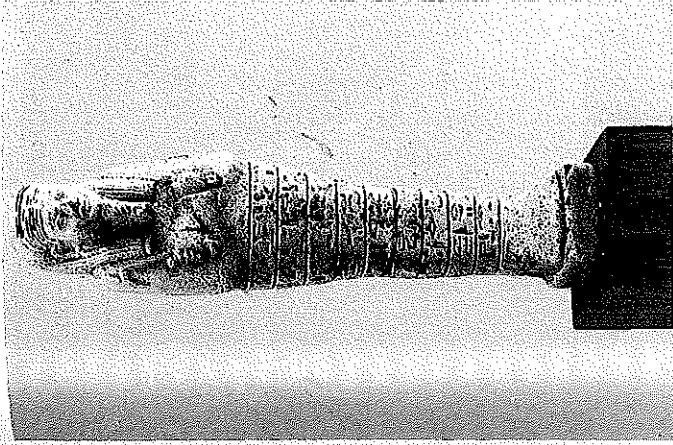
139 AN EGYPTIAN BRONZE FIGURE OF OSIRIS, wearing a plumed headdress, 10in. (25.5cm.), Late Period

(SEE ILLUSTRATION)

140 An Egyptian blue-glazed composition Ushabti Figure, the front with black-painted details and hieroglyphic inscription, 5½in. (14.3cm.); Another, smaller, 5in. (12.7cm.), both 21st/22nd Dynasty

141 AN EGYPTIAN WOOD MUMMY MASK, with black-painted details, 6½in. (16.5cm.), Late Period

(SEE ILLUSTRATION ON PAGE 52)



145

142 An Egyptian turquoise-glazed composition Ushabti Figure, 6¼in. (16.2cm.), 21st/22nd Dynasty

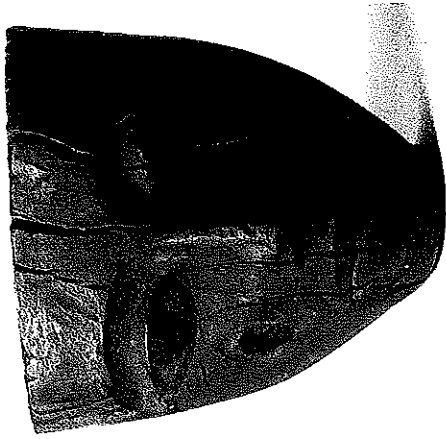
143 An Egyptian white-glazed composition Ushabti Figure, for the High Priest of Min Hori, with brown-painted details and six lines of hieroglyphic text, 6in. (15.2cm.), 20th Dynasty

144 AN EGYPTIAN BRILLIANT BLUE-GLAZED COMPOSITION USHABTI FIGURE OF NEHYT, daughter of Interwkheres, with black painted details, 6¼in. (15.9cm.), 30th Dynasty (repaired)

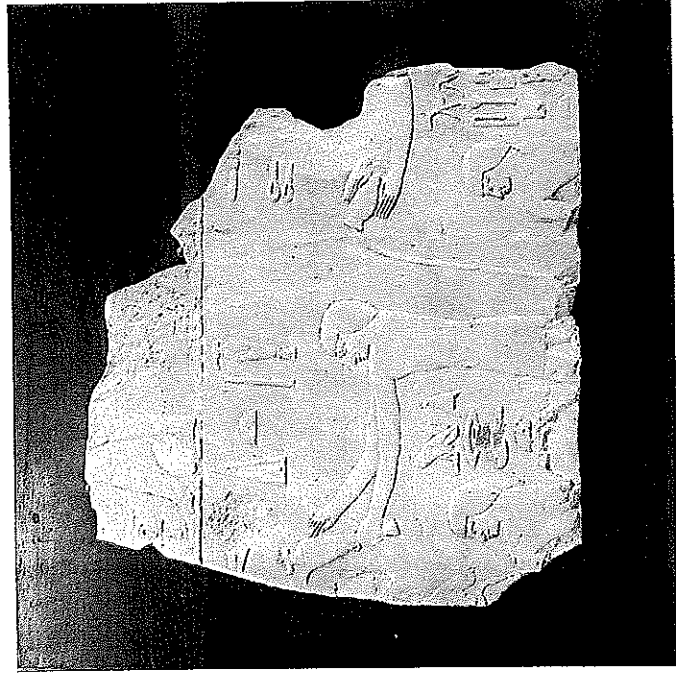
(SEE ILLUSTRATION)

145 AN EGYPTIAN GREEN-GLAZED COMPOSITION USHABTI FIGURE with nine horizontal bands of hieroglyphic text, 7¼in. (18.7cm.), 26th Dynasty (repaired)

(SEE ILLUSTRATION)



141



146

146 A LARGE FRAGMENT FROM AN EGYPTIAN LIMESTONE RELIEF, carved with figures and hieroglyphic inscriptions,  $16\frac{1}{2}$  in. (41 cm.) by  $17\frac{1}{2}$  in. (44.5 cm.), Old Kingdom

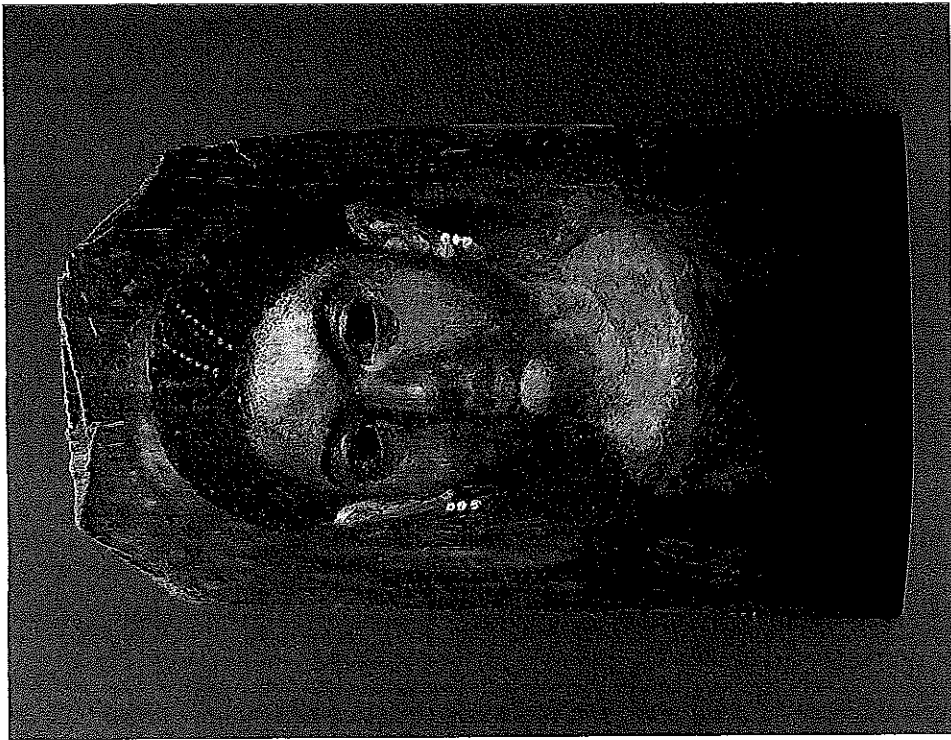
(SEE ILLUSTRATION)



147

147 AN EGYPTIAN ALABASTER OFFERING TABLE, of flat, circular form, on concave stemmed foot,  $12\frac{1}{2}$  in. diam. (32.4 cm.), Old Kingdom

(SEE ILLUSTRATION)



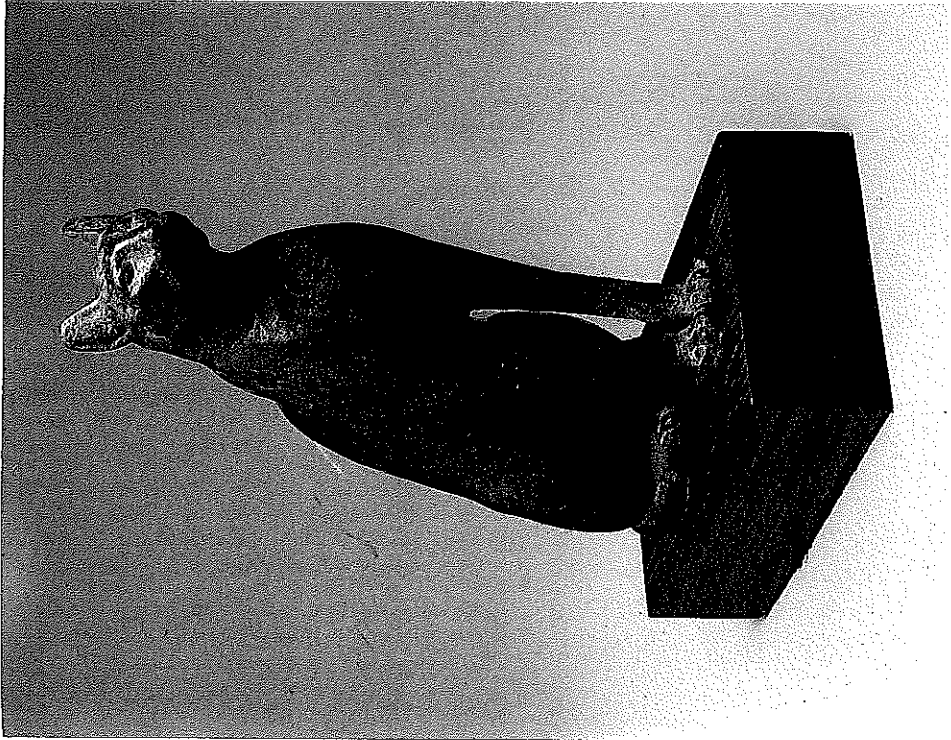
148

148 AN EGYPTIAN ENCAUSTIC "FAYUM" PORTRAIT, on wood panel, showing the bust of a female figure with a "melon" coiffure, wearing triple pearl earrings and two strands of pearls in her hair, with simple tunic with black stripe, 13in. (33.1cm.) by 8in. (20.8cm.), circa 2nd Century A.D.

\*\* Formerly in a German Private Collection

\* *Literature*: Parlasca, p. 37, ill. pl. 67, fig. XI

(SEE COLOUR ILLUSTRATION)



149

149 AN EGYPTIAN SEATED BRONZE FIGURE OF A CAT, its tail curling round towards its forepaws, 7½in. (19.1cm.), Late Period

(SEE COLOUR ILLUSTRATION)



151 A fragmentary Egyptian bronze group of Isis and Horus, the Goddess, who is wearing the horned solar disc headdress, is seated with the Infant Horus on her knee,  $5\frac{1}{2}$  in. (14 cm.), Late Period

152 AN EGYPTIAN DARK TURQUOISE-BLUE GLASS AMULETIC FIGURE OF A HORUS HAWK, with suspension loop at the back of the neck,  $1\frac{1}{2}$  in. (2.9 cm.), Late Period; and a small Egyptian green glazed composition Frog Amulet,  $\frac{1}{2}$  in. (1.6 cm.), Late Period (2)

153 AN EGYPTIAN BRONZE SEATED FIGURE OF OSIRIS,  $7\frac{1}{4}$  in. (18.1 cm.), 26th Dynasty

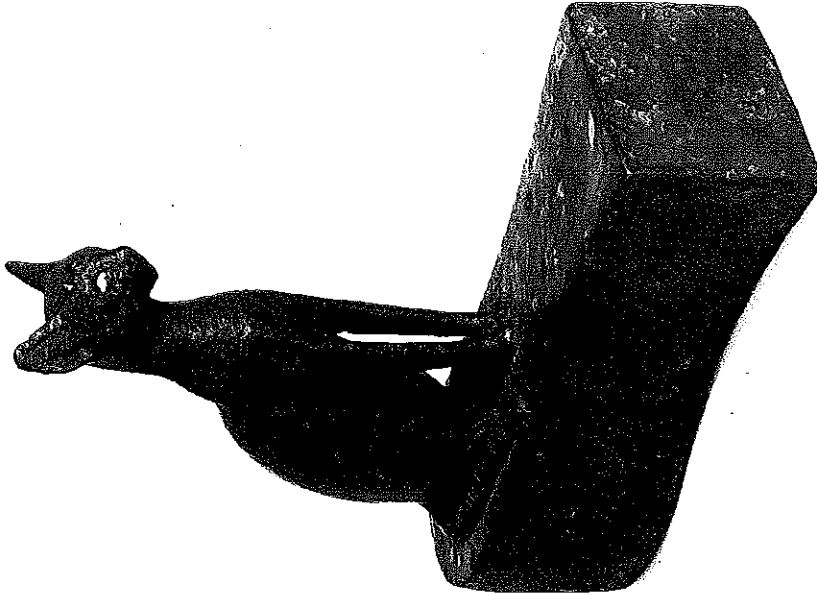
154 AN EGYPTIAN UNGLAZED-COMPOSITION USHABTI FIGURE OF THE PRIEST OF NEITH, HOR-UIJA, SON OF SHEDUF, WITH NINE LINES OF HIEROGLYPHIC TEXT,  $8\frac{3}{4}$  in. (22.3 cm.), 26th Dynasty.

\*\* Formerly in the Collection of the late Dr. F. Fox, formed in the 19th Century

155 An Egyptian orange pottery Vase of tall, slender tapering form, on flattened foot, with cylindrical neck and flattened rim, with handle attached to the neck and rounded shoulder,  $14\frac{1}{2}$  in. (36.9 cm.), New Kingdom, probably from a tomb at Assasif

\*\* Formerly in the Collection of Dr. F. Fox, formed in the 19th Century

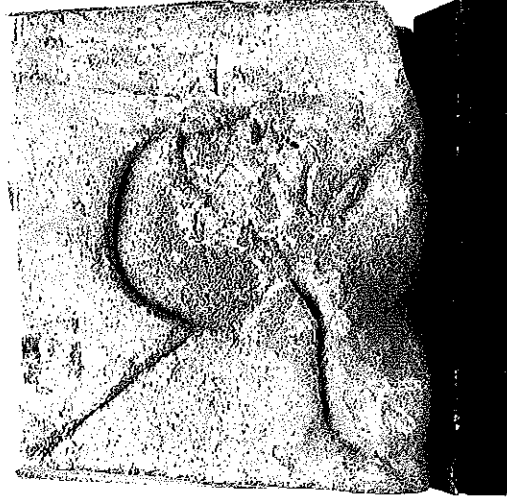
\* Cf. Hayes, Part II, fig. 123



150

150 AN EGYPTIAN BRONZE FIGURE OF A CAT, SEATED ON A SHAPED BASE,  $8\frac{1}{2}$  in. (21.6 cm.), Late Period

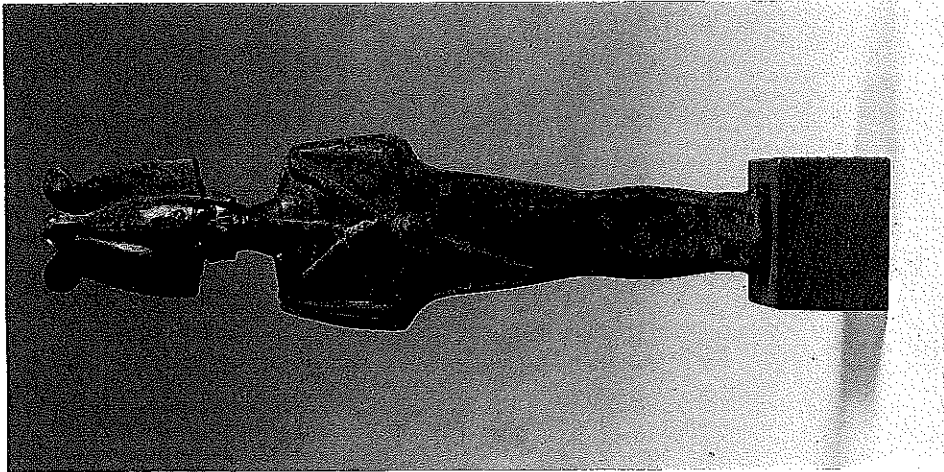
(SEE ILLUSTRATION)



156

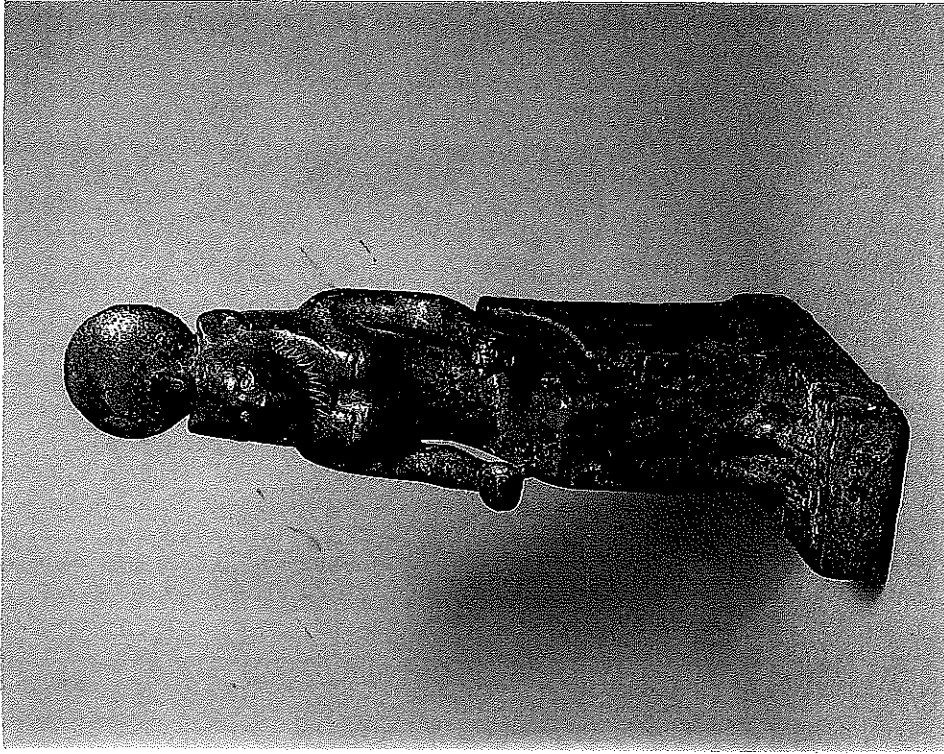
156 AN EGYPTIAN SANDSTONE FRAGMENT, FROM A RELIEF, CARVED WITH THE HEAD AND SHOULDERS OF A WOMAN IN PROFILE TO THE LEFT,  $6\frac{1}{2}$  in. (17.2 cm.), by  $7\frac{1}{2}$  in. (18.4 cm.), Amarna Period, circa 1379-1352 B. C.

(SEE ILLUSTRATION)



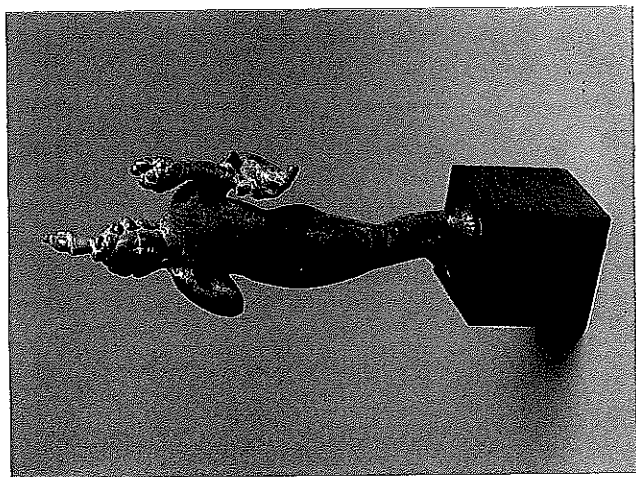
157

157 AN EGYPTIAN BRONZE FIGURE OF OSIRIS, with plumed headdress, the face with finely delineated features,  $19\frac{1}{4}$  in. (32.6cm.), 26th Dynasty  
(SEE COLOUR ILLUSTRATION)



158

158 AN EGYPTIAN BRONZE FIGURE OF THE GODDESS WADJET, the eyes inlaid with thin gold leaf, the mane incised, on the lower back of the figure is incised a vulture, on rectangular base, good patina,  $8\frac{1}{2}$  in. (20.7cm.), Late Period  
(SEE COLOUR ILLUSTRATION)



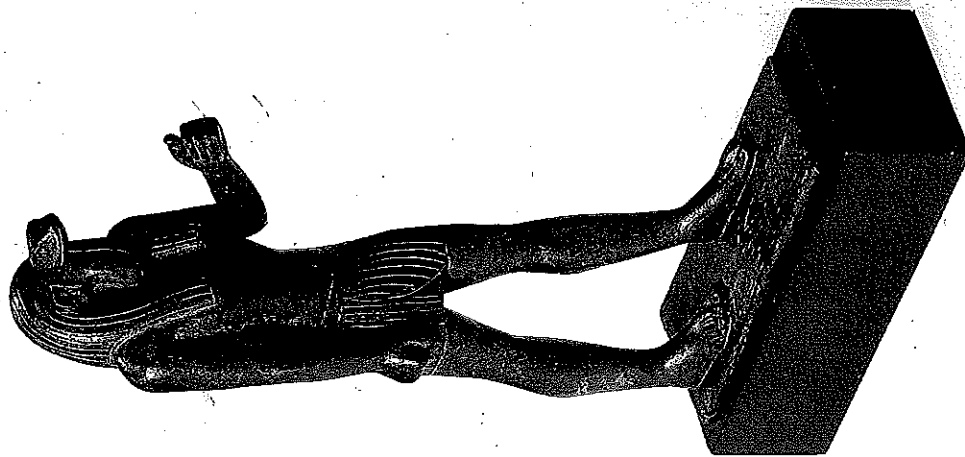
159

159 AN ALEXANDRIAN BRONZE FIGURE OF HARPOCRATES, nude, carrying a flame in his left hand, with right hand raised towards his mouth, wearing the Lock of Eternal Youth and Crown, standing with his left leg flexed, 7 $\frac{1}{4}$ in. (20cm.), circa 1st Century B.C./1st Century A.D.

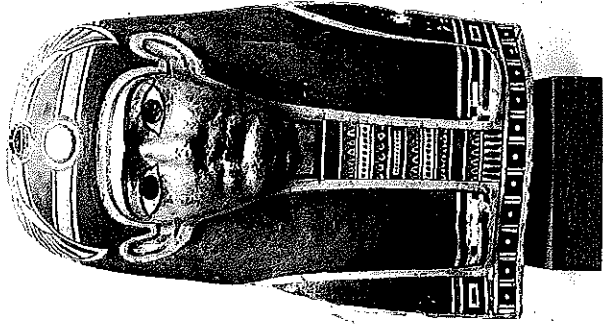
(SEE COLOUR ILLUSTRATION)

160 A Group of miscellaneous Egyptian glazed composition Amulets and Other Items including Ujat Eyes; Djed pillar Amulets; a turquoise-glazed composition Amulet in the form of the God Bes; a pale green-glazed composition Amulet in the form of the monkey-headed God; a green-glazed composition amuletic Figure of the hippopotamus-headed Goddess Thoeris; and a composition Amulet in the form of a Frog, all Late Period

161 AN EGYPTIAN BRONZE FIGURE OF HENER, the snake-headed God, the rectangular base inscribed, and gives the dedicator's name as PA-DI-AMUN, 6 $\frac{3}{4}$ in. (17cm.), 26th Dynasty



161



162

162 AN EGYPTIAN CARTONNAGE MUMMY MASK, the face gilded, a winged scarab on the top of the head, with long wig, the whole with vivid polychrome-painted decoration, 17½ in. (43.9 cm.), circa 1st Century A.D.

(SEE ILLUSTRATION)

163 An Egyptian bronze Figure of a Cat, 4½ in. (11.5 cm.), Late Period

164 AN EGYPTIAN BRONZE GROUP OF ISIS AND HORUS, the Goddess is seated with the infant on her knees, her eyes inlaid with gold, wearing a cobra headdress, a vulture incised on the back of her wig, good patina, 2½ in. (32.5 cm.), Late Period

(SEE COLOUR ILLUSTRATION)

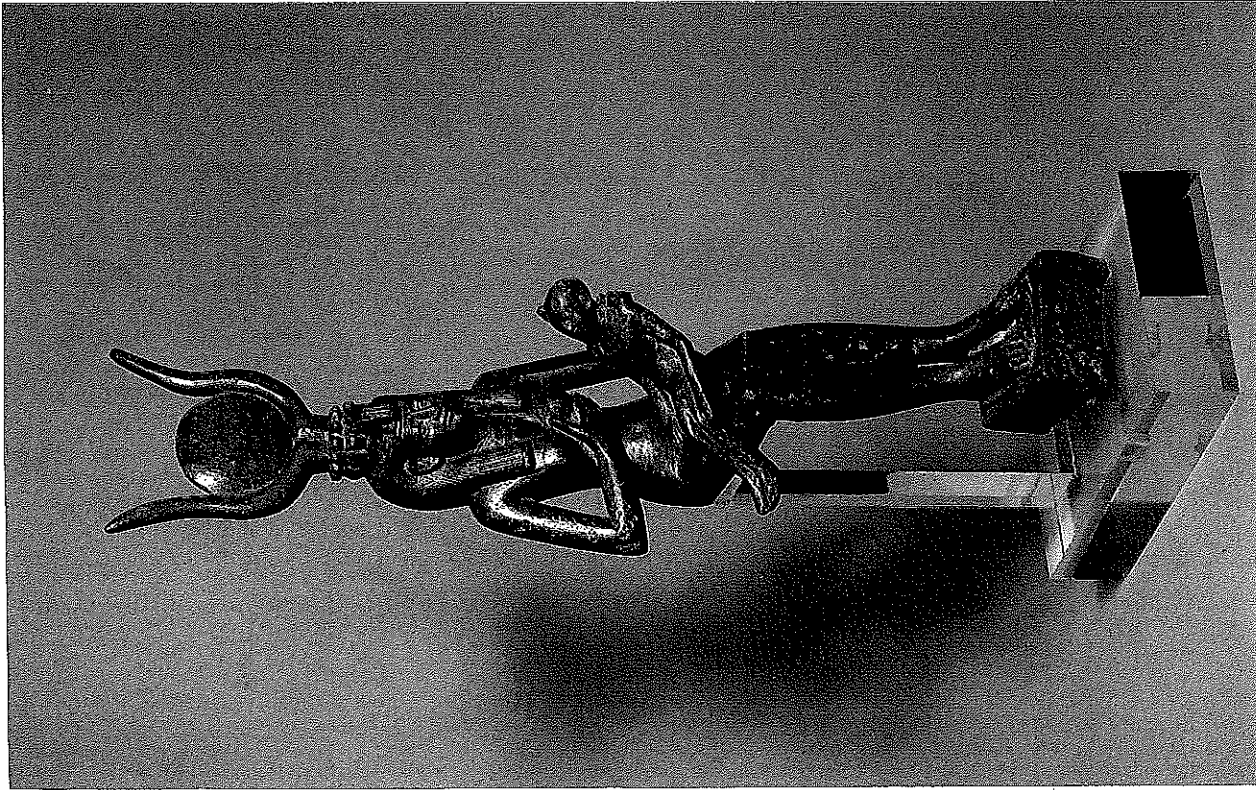
To be immediately followed by

the Sale of

THE AVAR TREASURE

Lots 165-180

(see separate catalogue)



164

- 603 A Group of miscellaneous Antiquities, including a Phrygian bronze Bowl of rounded form, with twin reel-shaped handle supports, a thick bronze band with four drop-shaped ornaments round the shoulder,  $8\frac{1}{2}$  in. diam (21.6 cm.), 7th-5th Century B.C.; an Etruscan bronze Meat Hook, 12 in. (30.5 cm.), 4th Century B.C. (damaged); and an Iranian bronze Phiale of circular form, with raised omphalos, 7 in. diam (17.8 cm.), 1st Millennium B.C. (a lot)
- 604 A Collection of twenty-seven Luristan bronze Pins, with various terminals, including animal heads, all 1st Millennium B.C. (27)
- 605 Two Luristan bronze Cheekpieces from a horse's bit, in the form of horses,  $2\frac{1}{2}$  in. (6.6 cm.), 8th/7th Century B.C. (2)
- 606 A chalcidony Stamp Seal, with an abstract design, pierced through the top for suspension, 1st Millennium B.C.; and an Early Dynastic Cylinder Seal with geometric designs (2)
- 606A A Mesopotamian small stone Weight in the form of a crouching hare, pierced with a hole for suspension,  $\frac{1}{2}$  in. (1.7 cm.), 3rd Millennium B.C.; Another, in the form of a duck, its head turned back over its body,  $\frac{1}{2}$  in. (1.9 cm.), 3rd Millennium B.C.; a small Western Asiatic reddish stone Pendant in the form of a fly; and two Western Asiatic stone Cylinder Seals (5)
- 607 A Group of four Luristan bronze Axeheads, including an Axehead with elliptical shaft-hole with round protuberance on the butt, the top of the shaft-hole cut away in a concave curve,  $3\frac{1}{2}$  in. (8.9 cm.), 2nd Millennium B.C. (4)
- 608 A Luristan bronze anthropomorphic janus Tube in the form of a small stylised figure flanked by rampant lions, cocks' heads project from their necks,  $6\frac{1}{4}$  in. (17.1 cm.), circa 850/650 B.C.
- 609 Another, the figure with two heads, one half-way down the tube, the lions without cocks' heads, with small haunches and long thin legs and tails,  $6\frac{1}{4}$  in. (17.5 cm.), circa 850/650 B.C.
- 610 Two Sasanian silver boat-shaped Bowls, both 6 in. (15.2 cm.) long, 6th/8th Century A.D.
- 611 EGYPTIAN ANTIQUITIES, Part II  
A Romano-Egyptian bronze Mirror, of plain disc form, the tanged handle terminating in twin spirals, 8 in. (20.3 cm.), circa 1st Century B.C. 1st Century A.D.
- 612 An Egyptian green-glazed composition Ushabti Figure, with eight horizontal bands of hieroglyphic text, back pillar plain,  $5\frac{1}{2}$  in. (13.4 cm.); and an Egyptian plain green-glazed composition Ushabti Figure,  $6\frac{1}{2}$  in. (16.2 cm.), both 26th Dynasty; and a Number of other miscellaneous Antiquities and other Items (a lot)

613 A Group of thirteen Egyptian alabaster and black stone Vessels, some with covers,  $1\frac{1}{2}$  in. (4.4 cm.),  $3\frac{1}{4}$  in. (7.9 cm.), Early Dynastic, Middle Kingdom and Later Periods; also five Lids (18)

613A AN EGYPTIAN SILVER FOUNDATION PLATE bearing the cartouche of King Osorkon II,  $3\frac{3}{4}$  in. (8.6 cm.) by  $1\frac{1}{4}$  in. (4.5 cm.), 22nd Dynasty

614 An -Egyptian alabaster Canopic Jar, with hawk-head Lid, 10 in. (25.5 cm.), Late Period; and Another, the-cover in the form of the head of Thoth,  $8\frac{1}{4}$  in. (22.3 cm.), both Late Period (2)

615 AN EGYPTIAN WOOD USHABTI FIGURE, with nine lines of horizontal text round the front of the figure, the text on the first three lines partially missing,  $11\frac{1}{4}$  in. (29.2 cm.), New Kingdom

616 A Group of miscellaneous Antiquities and other Items, including an Egyptian green-glazed composition Ushabti Figure,  $7\frac{1}{4}$  in. (18.4 cm.), 26th Dynasty (a lot)

617 Two Egyptian polychrome-painted kneeling wood female Figure,  $14\frac{1}{4}$  in. (37.5 cm.) and  $14\frac{1}{4}$  in. (36.2 cm.) (2)

618 An Egyptian bronze Figure of the God Nefertum,  $5\frac{1}{4}$  in. (14.7 cm.), Late Period

619 A Group of miscellaneous Egyptian glazed composition Amulets and other Items including two of the Dwarf God Bes, both double-sided, another pale turquoise-glazed composition Amulet in the form of a double-headed lion, a pale-green glazed composition amuletic Figure of the ibis-headed God, Thoth, and a stone "heart" Amulet (a lot)

620 An Egyptian polychrome-painted cartonnage Mummy Mask, 12 in. (30.5 cm.), New Kingdom

621 A pale bluish-green glazed composition Djed Pillar Amulet, the symbol of stability, 4 in. (10.2 cm.), Saite Period; and a small Egyptian anhydrite Jar and Cover (damaged),  $1\frac{1}{4}$  in. (3.8 cm.), Middle Kingdom; an Egyptian glazed composition Scaraboid in the form of a sphinx, with the cartouche of Tutmosis III, New Kingdom; and an Egyptian glazed composition Scaraboid in the form of a goose, with the name of Tutmosis III, New Kingdom (4)

\*\* Formerly in the Collection of Dr. F. Fox, formed in the 19th Century

- 622 A Group of miscellaneous Egyptian Antiquities and other Items, including a blue-glazed composition Udjat Eye Amulet; and two green-glazed composition Ushabti Figures, both 4½ in. (10.8cm.), 21st/22nd Dynasty (10)
- 623 An Egyptian bronze Group of Isis and Horus (lower part of legs missing), 5 in. (12.7cm.), Late Period
- 624 A miscellaneous Group of Antiquities, including a pale green glazed composition Ushabti Figure, 5½ in. (14.4cm.), 21st/22nd Dynasty; Roman pottery Lamps; and Roman Glass Vessels (a lot)
- 625 A Group of miscellaneous Antiquities including two Romano-Egyptian terracotta Heads of Hathor and a Fragment of Egyptian mummy cartonnage (a lot)
- 626 A miscellaneous Collection of Antiquities and other Items, mostly Egyptian, including Egyptian glazed composition Amulets and Scarabs, also a Group of small English bronze Antiquities of Roman date, mounted (a lot)
- 627 AN EGYPTIAN WOOD MASK, the face yellow and with black-painted details, 6¼ in. (15.9cm.), Late Period
- 628 A Group of Egyptian glazed faience Amulets, including a large Udjat Eye, a seated figure of Sekhmet, an ibis, the Goddess Mut, and the hawk-headed God; also a Number of other Egyptian glazed faience Antiquities (a lot)
- 629 An Egyptian composition Amuletic seated Figure of the lioness-headed Goddess Sekhmet, 2½ in. (7cm.), 26th Dynasty; three fragmentary Egyptian glazed composition Ushabti Figures, all 26th Dynasty; an Egyptian blue-glazed composition Udjat Eye Amulet; and a number of other miscellaneous Items, mostly Egyptian (a lot)
- 630 An Egyptian blue-glazed composition Amulet in the form of a Horus Hawk; Egyptian glazed composition Scarabs; an Egyptian composition Amulet of the God Thoth; and a Number of other miscellaneous Items, mostly Egyptian. (a lot)
- 631 A Romano-Egyptian pottery Head of a Child, 5¼ in. (13.3cm.), 1st Century B.C./1st Century A.D.; a Roman stone male Head, 3¼ in. (9cm.); an Egyptian bronze Figure of Osiris, 3¼ in. (9.5cm.), 26th Dynasty; and two small Attic black-figure pottery vases, 6th Century B.C. (5)
- 632 A miscellaneous Collection of Egyptian glazed composition and a stone Scarab (21)
- 633 An Egyptian bronze seated Figure of Osiris, wearing a horned solar disc headdress, 4½ in. (11.5cm.), Late Period; a Roman bronze Vase Handle, the terminal in the form of a human mask, 4½ in. (12.1cm.); a Roman bronze female Bust, 4 in. (10.1cm.); two small Roman marble miniature Heads; a Greek terracotta seated female Figure, 5½ in. (13.3cm.), 5th Century B.C.; and an Egyptian terracotta male Head, 3 in. (7.6cm.), Late Period (7)
- 634 An Egyptian bronze Figure of Osiris wearing a plumed headdress, 6½ in. (17.2cm.), Late Period
- 635 A Group of four small Egyptian alabaster and stone Vessels, all Early Dynastic/Middle Kingdom (4)
- 636 Five Egyptian glazed composition Inlays in the form of rosettes, all grey and white with touches of yellow, New Kingdom (5)
- 637 A Collection of miscellaneous Antiquities and other Items, including an Egyptian green-glazed composition Ushabti Figure with nine horizontal lines of hieroglyphic text, 6 in. (15.2cm.), 26th Dynasty; and an Egyptian terracotta Foundation Con, the base with hieroglyphic text, 6½ in. (16.5cm.), New Kingdom (a lot)
- 638 An Egyptian bronze seated Figure of Harpocrates, wearing a plumed headdress, 7 in. (17.8cm.), 26th Dynasty
- 639 AN EGYPTIAN POTTERY USHABTI FIGURE, with polychrome-painted decoration, the name of the female illegible, 8½ in. (21.6cm.), 20th Dynasty
- 640 An Egyptian bronze tanged Mirror, with plain disc, 7¼ in. (20cm.), Late Period
- 641 An Egyptian bronze Figure of a cat, 4½ in. (11.4cm.), Late Period
- 642 A Group of miscellaneous Egyptian Amulets, including a reddish hardstone "heart" amulet; two glazed composition Djed pillar amulets, a pale-green glazed composition amuletic figure of the dwarf God Bes, and a glazed composition papyrus column amulet, all Late Period (7)
- 643 An Egyptian black stone amuletic Figure of the hawk-headed Son of Horus, 2½ in. (5.8cm.), Late Period; and an Egyptian yellow-glazed composition Amulet in the form of a dolphin, New Kingdom (2)
- 644 A Coptic limestone Panel carved in high relief with grapes and vine leaves, 11¼ in. (29.2cm.) by 14¼ in. (36.5cm.), circa 5th Century A.D.

- 645 A small Coptic bone Jar with diminutive lug handles, the sides with incised decoration,  $1\frac{1}{4}$  in. (4.2cm.), 5th/6th Century A.D.
- 646 An alabaster Jar with ovoid tapering body and flattened foot, pierced lug handles on the shoulder, with short neck and rounded rim,  $6\frac{1}{2}$  in. (16.5cm.)
- 647 An Egyptian green-glazed composition Ushabti Figure, with eight horizontal bands of hieroglyphic text,  $7\frac{1}{2}$  in. (18.4cm.), 26th Dynasty
- 648 A Romano-Egyptian terracotta Figure of a warrior,  $13\frac{1}{2}$  in. (33.7cm.), circa 1st Century B.C./1st Century A.D.; and a Number of other miscellaneous Items (a lot)
- 649 A Group of Egyptian Amulets and other Items in various materials, including three seated cynocephalus apes, two figures of Tau-Ert, the hippopotamus-headed Goddess, and two birds (16)
- 650 A Group of eight fragmentary Coptic Textiles with a variety of designs (8)
- 651 An Egyptian marble Figure of a hawk,  $1\frac{1}{2}$  in. (4.1cm.), Late Period
- 652 Seven Egyptian turquoise-glazed composition Inlays from Groups of the Four Sons of Horus, comprising two of human-headed Ansesty, and five of baboon-headed Hapi,  $2\frac{1}{2}$  in. (6.5cm.), 26th Dynasty; and twenty-four other glazed composition amuletic Figures, Inlays and Fragments (31)
- 653 An Alexandrian bronze Figure of a dwarf depicted as a boxer,  $1\frac{1}{4}$  in. (4.8cm.), circa 1st Century B.C./1st Century A.D.; a Roman bronze Figure of Hercules,  $2\frac{1}{2}$  in. (5.8cm.), circa 2nd Century A.D.; and a Roman bronze Figure of Isis seated on a throne, the infant Horus on her knees,  $2\frac{1}{2}$  in. (6.4cm.), circa 1st/2nd Century A.D. (3)
- 654 An Egyptian bronze seated Figure of Horus, the hawk-headed God,  $3\frac{1}{2}$  in. (8.9cm.), Late Period; two Egyptian bronze Figures of Harpocrates,  $2\frac{1}{2}$  in. (7.3cm.),  $3\frac{1}{2}$  in. (8.6cm.), both Late Period; and a Number of Egyptian and other Bronzes (a lot)
- 655 An Alexandrian bronze Figure of Harpocrates seated on a lotus throne,  $3\frac{1}{2}$  in. (8.9cm.), 1st Century B.C./1st Century A.D.; and a Number of other miscellaneous small Bronzes (a lot)
- 656 An Egyptian Pre-Dynastic pottery Jar of ovoid form, with vertical wavy band decoration in brown slip, 6 in. (15.2cm.), circa 3000 B.C.; a Cypriot pottery "milk bowl" of hemispherical form and with wishbone handle, decorated with vertical hatched bands in brown slip,  $9\frac{1}{2}$  in. (23.7cm.) diam., circa 1600 B.C.; and a Number of other Ancient pottery Vessels and the Lid from a Vessel (19)
- 657 A Group of miscellaneous Antiquities and Other Items, including an Egyptian polychrome-painted terracotta Doll,  $5\frac{1}{4}$  in. (14cm.); a Greek terracotta Figure of a siren, with white-slip decoration, 4 in. (10.2cm.), 5th Century B.C.; and an Egyptian green-glazed composition Inlay in the form of a kneeling Goddess, 2 in. (5.1cm.), 26th Dynasty (a lot)
- 658 A Group of miscellaneous Antiquities and Other Items, including small Romano-Egyptian terracotta Figures, including a terracotta Figure of Harpocrates,  $3\frac{1}{2}$  in. (8.9cm.), and four small Romano-Egyptian terracotta female Figures in erotic positions,  $1\frac{1}{2}$  in. (3.9cm.),  $2\frac{1}{4}$  in. (6.4cm.), all circa 1st Century B.C./1st Century A.D. (a lot)
- 659 A Collection of eighteen Egyptian turquoise-glazed composition Gaming Pieces of varying types, one surmounted by the head of the dwarf God Bes, all New Kingdom 26th Dynasty (18)
- 660 An Egyptian limestone female Figure standing with her arms held tightly at her sides, back flat and unworked, 14 in. (35.6cm.), Late Period
- 661 An Egyptian alabaster Canopic Jar and Cover, the cover in the form of the human-headed Ansesty,  $16\frac{1}{2}$  in. (41.9cm.) (2)
- 662 A Group of seventeen Udjat Eye Amulets and "heart" Amulets in varying materials (17)
- 663 An Egyptian bronze Figure of Bes, the dwarf God, flat behind,  $3\frac{1}{2}$  in. (9.5cm.), Late Period; an Egyptian glazed composition Figure of Ptah,  $2\frac{1}{2}$  in. (5.4cm.), Late Period; the Upper Part of a glazed composition Figure of Sekhmet,  $2\frac{1}{2}$  in. (6.4cm.), 26th Dynasty; two Egyptian glazed composition Amuletic Figures of Bes; and a Group of ten small Egyptian bronze Figures of animals and Gods (15)
- 664 Three Egyptian mortled grey stone Udjat Eye Amulets, Late Period (3)
- 665 AN EGYPTIAN BRONZE FIGURE OF PTAH, standing on a trapezoidal base and wearing a close-fitting cloak, incised broad collar, striated beard and close-fitting cap, his protruding hands grasping the was-sceptre,  $8\frac{1}{2}$  in. (22.2cm.), Late Period
- 666 An Egyptian stucco Fragment of a wall painting, painted in red, white and black, with a male figure in profile wearing a broad collar and a long robe tied at the waist; 6 in. by  $2\frac{3}{4}$  in. (15.2 by 6.7cm.), New Kingdom

- 667 AN EGYPTIAN STUCCO FRAGMENT from a Wall Painting with the profile head of a man, painted in terracotta, outlined in red, with brown and white details, 4in. (10.1cm.) by 5in. (12.7cm.)
- 668 AN EGYPTIAN POLYCHROME-PAINTED STUCCO FRAGMENT from a Wall Painting with the bust of a bearded man in profile, 3½in. (9.8cm.) by 4½in. (12.4cm.), *New Kingdom*
- 669 A Collection of miscellaneous Egyptian Amulets, including Udjat Eyes, and heart Amulets, in various materials (a lot)
- 670 An Egyptian Pre-Dynastic black-topped pottery Jar tapering to a small, flat foot, 7½in. (19cm.), *circa 3000 B.C.*
- 671 A Group of miscellaneous small Egyptian bronze Animals including a bronze Figure of an Apis bull, 1½in. (4.1cm.) (a lot)
- 672 A Romano-Egyptian terracotta Figure of Aphrodite, nude, standing with her right arm around a figure of Eros, 4½in. (12.4cm.); a Romano-Egyptian terracotta Figure of a nude boy, a himation around his shoulders, standing beside a column, on semi-circular base, 5½in. (14cm.); a Romano-Egyptian terracotta Figure of Priape, 5½in. (13.7cm.); a Romano-Egyptian terracotta Group of a young boy riding a horse, 5½in. (14cm.); and a Romano-Egyptian terracotta Figure of a nude young man, holding a simula, 4½in. (11.8cm.), all *circa 1st Century B.C./1st Century A.D.*; and two Hellenistic terracotta female Figures, 6in. (15.2cm.) and 6½in. (16.5cm.), *circa 3rd Century B.C.* (7)
- 673 A Romano-Egyptian terracotta Mask in the form of a bearded male face, with large open eyes and mouth, 9in. (22.9cm.), *circa 1st Century B.C./1st Century A.D.*
- 674 A Group of miscellaneous small Antiquities, including an Egyptian composition amuletic Figure of the dwarf God Bes, 2½in. (8.9cm.); 26th *Dynasty*; an Egyptian green-glazed composition Bust of the Goddess Isis, from a figure, 2½in. (5.4cm.); 26th *Dynasty*; and eight small Romano-Egyptian terracotta Figures, mostly erotic, 1½in. (4.8cm.)/3½in. (7.9cm.), *circa 1st Century B.C./1st Century A.D.* (22)
- 675 A Pre-Dynastic Egyptian mortled black-stone Macahead, 3½in. (8.3cm.) diam., *circa 3200 B.C.*; an Egyptian Pre-Dynastic breccia marble Macahead, 2½in. (6cm.) diam., *circa 3200 B.C.*; a Number of Egyptian small alabaster and stone Vessels (a lot)
- 676 A Group of miscellaneous Antiquities and Other Items, including an Egyptian turquoise-glazed composition Ushabti Figure with black-painted details, 4½in. (10.5cm.), 20th/21st *Dynasty*; a small Egyptian bronze Head of a cat, 1½in. (3.2cm.), *Late Period*; and a Roman glass Beaker, 2½in. (7cm.), *circa 1st Century A.D.* (a lot)  
 \*\* Formerly in the Collection of Dr. F. Fox, formed on the 19th Century
- 677 An Egyptian bronze Mirror with plain circular disc, the handle of foliate winged form and terminating in the head of a duck, 8½in. (21cm.), *Late Period*
- 678 An Egyptian green-glazed composition Ushabti Figure for Heru (?) Son of NTS (?), with ten horizontal bands of hieroglyphic text, 7½in. (18.1cm.); and six other miscellaneous Items (7)
- 679 A Romano-Egyptian bluish-green glazed pottery Relief of fragmentary form, with the bust of a human figure, his head turned to the right, 3in. (7.6cm.), *1st Century B.C./1st Century A.D.*
- 680 An Egyptian stone 'Heart of Osiris' Figure, 4in. (10.2cm.), *Late Period*
- 681 A FRAGMENT FROM AN EGYPTIAN LIMESTONE RELIEF, carved with the head of a woman, 11in. by 5½in. (28cm. by 14cm.), *Amarna Period, circa 1879/1362 B.C.*
- 682 A Fragment from an Egyptian Naophorus stone kneeling figure, originally holding a funerary stele, a vertical frieze of inscription down the back pillar, with the name Priest of Amun Kha-Em-Opet, 14in. (35.6cm.), *New Kingdom, 19th/20th Dynasty, circa 1150 B.C.*
- 683 A FRAGMENT OF AN EGYPTIAN LIMESTONE KNEELING MALE FIGURE, a funerary stele with five lines of hieroglyphic inscription and surmounted by the disk and boat of Ra-Harmachis in front of him, his hands upraised above the straight top edge, the stele containing hymns to the sun when it rises and sets on behalf of the water carrier of Amun Huy, 17½in. (44.5cm.), *New Kingdom*
- 684 A FRAGMENT FROM AN EGYPTIAN LIMESTONE RELIEF, with part of a Royal inscription, with the cartouche of Ptolemy III, Son of Ptolemy II, 11½in. by 16in. (29.2cm. by 40.5cm.), *Ptolemaic Period*



# Sotheby Parke Bernet & Co.

ESTIMATES

34-35 New Bond Street, London W1A 2AA Telephone: 01-493 8080  
Telex: 24454 SPBLON-G Registered at the above address No. 874867

The prices below are intended as a guide for prospective purchasers. Any bid between the listed figures would in our opinion, offer a fair chance of success. However, all lots, depending on the degree of competition, can realise prices either above or below the listed estimates. It is always advisable to consult us nearer the time of sale as estimates can be subject to revision. If instructed, we will execute bids and advise intending purchasers. This service is free and all bids are treated in strict confidence. Lots will always be bought as cheaply as is allowed by such other bids and reserves as are on our books. The estimates quoted below are exclusive of 10% premium payable on the hammer price.

**Sale of ANTIQUITIES**

Monday & Tuesday, 14th & 15th December 1981

"HENE8"

SPECIAL VIEWING			
Sunday, 13th December, 1981			
from 12 noon until 4 p.m.			
Lot	£	Lot	
1	80/120	34	400/600
2	200	35	600/1000
3	100	36	200/300
4	300/600	37	500/800
5	150/300	38	300/500
6	500/800	39	200/300
7	400/600	40	300/400
8	400/600	41	200/300
9	500/800	42	800/1200
10	600/800	43	200/300
11	300/500	44	100/200
12	600/800	45	80/100
13	500/600	46	80/120
14	500/600	47	150/250
15	500/600	48	800/1200
16	400/600	49	800/1200
17	300/400	50	600/800
18	200/300	51	800/1200
19	600/800	52	200/300
20	100/200	53	200/300
21	100/200	54	200/300
22	100/200	55	300/400
23	100/200	56	500/600
24	100/200	57	200/300
25	100/200	58	300/400
26	100/200		
27	300/400		
28	600/800		
29	200/300		
30	200/400		
31	200/400		
32	400/800		
33	400/600		
		59	800/1200
		60	800/1200
		61	2500/3500
		62	1200/1500
		63	800/1200
		64	200/300
		65	300/500
		66	600/800
		67	300/500
		68	1500/2000
		69	400/600
		70	400/600
		71	300/500
		72	300/500
		73	100/200
		74	100/200
		75	600/800
		76	600/800
		77	100/200
		78	200/300
		79	800/1200
		80	200/300
		81	300/500
		82	300/500
		83	150/200
		84	200/300
		85	200/300
		86	300/500
		87	200/300
		88	200/300
		89	200/300
		90	400
		91	200/300
		92	150/300
		93	400/600
		94	500/800
		95	600/800
		96	1000/1500
		97	600/1000
		98	600
		99	200
		100	100/200
		101	200/300
		102	200/300
		103	60/80
		104	400/600
		105	200/300
		106	300/500
		107	200/300
		108	600/800
		109	200/300
		110	200/300
		111	200/300
		112	200/300
		113	500/800
		114	300/400
		115	2000/3000
		115A	600/800

"HENE"\*

Lot	£	Lot	£	Lot	£	Lot	£	Lot	£	Lot	£	Lot	£	Lot	£	Lot	£	Lot	£
116	1000/1500	162	600/800	220	300/500	312	200/300	357	3000/4000	400	650/800	447	300/400						
117	500/800	163	200/300	221	200/300	313	200/300	358	150/200	401	100/200	448	500/800						
118	Refer Dept	164	10000/15000	222	400/600	314	200/300	359	100/150	402	150/200	449	150/250						
119	400/600	165	100/200	223	100/200	315	200/300	360	200/300	403	1500/2500	450	400/600						
120	2000/3000	166	100/200	224	300/500	316	200/300	361	100/200	404	800/1000	451	400/600						
120A	800/1200	167	1500	225	1500	317	100/200	362	150/200	405	800/1000	452	200/300						
121	300/400	168	250/300	226	800/1200	318	300/400	363	100/200	406	800/1000	453	300/500						
122	600/1000	169	200	227	800/1200	319	200/300	364	100/200	407	200/400	454	800/1200						
123	3000/5000	170	200	228	4000/6000	320	200/300	365	100/200	408	1000/1200	455	400/600						
124	200/300	171	500	229	3500/4500	321	200/300	366	100/200	409	1000/1200	456	200/250						
125	600/800	172	600/800	230	200/300	322	300/500	367	200/300	410	1000/1200	457	200/300						
126	1000/1500	173	650/850	231	200/400	323	1000	368	100/200	411	150/200	458	200/300						
127	1500/2000	174	400	232	600/900	324	600/1000	369	100/200	412	50/80	459	100/200						
128	800/1200	175	200	233	2000/3000	325	600/800	370	300/400	413	120/150	460	300/400						
129	3000/5000	176	550/650	234	2000/3000	326	1500/2000	371	3000/5000	414	100/150	461	150/250						
130	200/300	177	550/650	235	200/300	327	1500/2000	372	1500/2000	415	30/60	462	120/200						
131	2000/3000	178	200/300	236	800/1200	328	600/800	373	2000/3000	416	200/300	463	250/300						
132	200/300	179	200	237	300/400	329	600/800	374	6000/8000	417	60/100	464	120/180						
133	1000/1500	180	300/400	238	300/500	330	200/300	375	1500/2000	418	1000/2000	465	200/250						
134	600/800	181	350/500	239	300/500	331	200/300	376	Refer Dept	419	250/450	466	120/200						
135	600/800	182	100/200	240	400/600	332	80/120	377	200/300	420	150/250	467	1000/1500						
136	200/300	183	400/500	241	1000/1500	333	200/300	378	200/300	421	500/800	468	300/500						
137	300/500	184	200/300	242	800/1200	334	800/1200	379	200/300	422	500/800	469	180/250						
138	1000/1500	185	300/400	243	300/500	335	1000/2000	380	200/300	423	300/600	470	180/250						
139	1200	186	2000/3000	244	200/300	336	2000/3000	381	100/200	424	300/500	471	200/350						
140	500	187	3000/4000	245	200/300	337	2000/3000	382	300/500	425	150/250	472	200/350						
141	800/1200	188	1000/2000	246	100/200	338	1500/2000	383	200/300	426	150/250	473	120/200						
142	200/300	189	1000/2000	247	400/600	339	1200/1500	384	200/300	427	60/80	474	120/150						
143	200/300	190	2000/3000	248	200/300	340	1500/2000	385	300/500	428	150/250	475	180/250						
144	400/600	191	600/800	249	200/300	341	300/400	386	1500/2000	429	200/400	476	1000/1500						
145	200/300	192	600/800	250	200/300	342	300/500	387	1500/2500	430	200/300	477	180/250						
146	800/1200	193	200/300	251	200/300	342A	100/200	388	2000/3000	431	1000/1500	478	150/200						
147	800/1200	194	200/300	252	1000/1500	342B	300/500	389	4000/5000	432	400/600	479	1200/2000						
148	5000/6000	195	100/200	253	1000/1500	343	800/1000	388A	800/1200	433	150/200	480	1200/2000						
149	6000/8000	196	100/200	254	300/500	344	400/600	388B	200/300	434	300/400	481	400/600						
150	4000/6000	197	300/400	255	300/400	345	1000/2000	389	3000/5000	435	800/1000	482	100/150						
151	100/150	198	300/400	256	800/1200	346	800/1200	390	800/1200	436	300/500	483	250/350						
152	140/180	199	200/300	257	300/400	347	2000	390A	300/500	437	2000/3000	484	100/150						
153	400/600	200	200/300	258	300/400	348	3000/4000	391	5000/6000	438	300/500	485	150/200						
154	300/500	201	600/800	259	400/500	349	2000/3000	392	No Lot	439	200/300	486	200/300						
155	200/300	202	100/200	260	2000/4000	350	800/1200	393	500/800	440	250/350	487	20/50						
156	300/400	203	200/300	261	800/1200	351	800/1200	394	600/800	441	300/400	488	200/300						
157	4000/6000	204	200/300	262	8000/10000	352	200/300	395	1500/2500	442	150/250	489	150/250						
158	2000/3000	205	800/1000	263	2000/3000	353	250/350	396	800/1200	443	80/100	490	1500/2000						
159	1500/2000	206	80/100	264	300/500	354	300/500	397	600/1000	444	50/100	491	200/300						
160	600/800	207	200/300	265	300/500	355	600/800	398	800/1200	445	120/150	492	300/500						
161	10000/15000	208	200/300	266	200/300	356	100/200	399	800/1200	446	350/500	493	100/200						

"HENEB"

Lot	£	Lot	£	Lot	£	Lot	£	Lot	£	Lot	£	Lot	£	Lot	£	Lot	£	Lot	£
494	200/300	543	150/200	592	100/150	639	100/200	688	100/200	737	80/100	786	200/300						
495	200/300	544	40/60	593	60/80	640	200/300	689	200/300	738	200/300	787	200/300						
496	300/400	545	60/100	594	250/350	641	200/300	690	100/150	739	400	788	80/100						
497	250/300	546	180/220	595	100/150	642	100/200	691	200/300	740	200/300	789	300/600						
498	120/150	547	30/50	596	150/250	643	100/200	692	150/250	741	200/300	790	30/40						
499	300/450	548	40/60	597	100/200	644	100/200	693	150/200	742	100/200	791	30/50						
500	100/200	549	80/120	598	80/100	645	20/30	694	300/400	743	400/500	792	60/80						
501	350/500	550	200/300	599	100/200	646	50	695	150/200	744	300/400	793	200/300						
502	80/120	551	60/100	600	300/500	647	100/150	696	200/300	745	50	794	300/400						
503	400/600	552	80/120	601	100/150	648	600/800	697	150/200	746	200/300	795	200/300						
504	100/180	553	60/80	602	400/600	649	80/100	698	200/300	747	50/80								
505	200/300	554	100/150	603	500/800	650	200/300	699	100/200	748	80/100								
506	300/400	555	50/80	604	400/600	651	80/100	700	80/120	749	200/300								
507	150/200	556	40/60	605	300/500	652	200/300	701	200/300	750	80/100								
508	200/300	557	160/180	606	80/100	653	150/200	702	200/300	751	80/120								
509	150/200	558	30/40	606A	300/500	654	300/400	703	200/300	752	80/100								
510	120/180	559	30/60	607	200/300	655	200/300	704	200/300	753	80/120								
511	100/200	560	20/30	608	200/300	656	150/200	705	100/200	754	60/80								
512	150/250	561	80/120	609	200/300	657	200/300	706	200/300	755	200/300								
513	100/150	562	250/350	610	100/200	658	100/150	707	200/300	756	400/500								
514	200/400	563	40/60	611	100/200	659	100/200	708	100/200	757	150								
515	100/120	564	200/300	612	600/800	660	100/200	709	300/500	758	100								
516	100/150	565	40/60	613	300/500	661	200/300	710	200/350	759	200/300								
517	200/400	566	500/600	613A	400/600	662	80/100	711	100/200	760	400/800								
518	250/350	567	200/220	614	500/800	663	200/300	712	100/200	761	300/400								
519	800/1200	568	40/60	615	300/500	664	300	713	300/500	762	300/400								
520	80/120	569	40/60	616	300	665	300/400	714	200/300	763	400/600								
521	80/150	570	30	617	300/400	666	80/100	715	100/200	764	100/200								
522	150/300	571	30	618	100	667	500/800	716	150/200	765	100/150								
523	100/200	572	30	619	100/200	668	200/300	717	100/200	766	80/100								
524	100/200	573	30	620	100/200	669	200/300	718	100/200	767	50/60								
525	200/400	574	40/60	621	300/400	670	80/120	719	60/80	768	60/80								
526	100/150	575	280/300	622	150/200	671	200/300	720	250/350	769	80/120								
527	150/250	576	280/300	623	150/200	672	400/500	721	200/300	770	300/400								
528	80/100	577	30	624	200	673	100/200	722	300/400	771	300/500								
529	100/150	578	80/120	625	200/300	674	500/600	723	100/200	772	100/120								
530	120/200	579	280/300	626	600/800	675	200/300	724	30/50	773	100/200								
531	60/80	580	180/200	627	80	676	200/300	725	150	774	200/300								
532	100/150	581	100/200	628	200/300	677	200/300	726	80/100	775	300/400								
533	80/120	582	200/300	629	100/200	678	300/400	727	300/400	776	300/500								
534	60/100	583	300/350	630	100/200	679	60/80	728	600/800	777	600/700								
535	80/120	584	80/100	631	200/300	680	80/100	729	200/400	778	60/80								
536	150/200	585	80/100	632	100/200	681	100/150	730	60	779	100/150								
537	150/250	586	200/300	633	300/400	682	200/200	731	60/80	780	100/200								
538	200/250	587	80/100	634	1500	683	200/300	732	80/120	781	100/200								
539	120/150	588	100/200	635	100	684	100/200	733	200/300	782	200/300								
540	60/100	589	200/300	636	80/100	685	120/180	734	60/80	783	200/300								
541	250/300	590	100/200	637	300/400	686	100/200	735	300	784	100/200								
542	100/150	591	60/80	638	200	687	200/300	736	400/500	785	200/300								

END OF SALE